

INSTALLATION GUIDE

FOR SCREENS AND VIDEO PLAYERS



CONNECTION PROCEDURE OF VIDEO PLAYER



STEP 1

Turn on the screen and select the input corresponding to the video cable



Power Button

STEP 4

Connect the player's power cord. (Power connector)

USB ports for mouse / keyboard

STEP 2

Connect the Internet cable into the player. (Ethernet connector)

STEP 3

Connect the video cable into the player and the screen. (Mini Display Ports or HDMI outputs)

POSITIONING OF VIDEO PLAYER AND SOCKETS

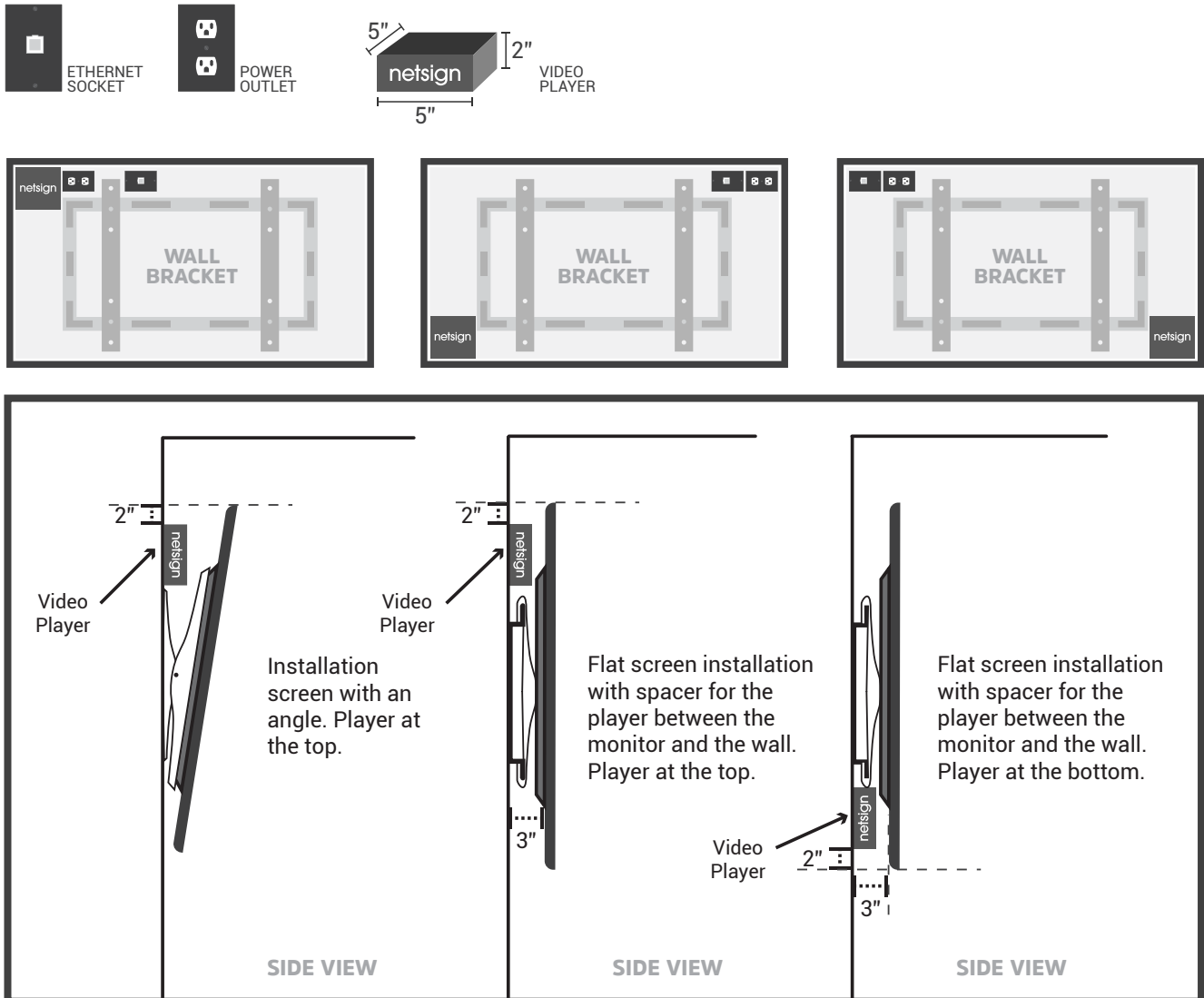
The objective is to make the sockets and the video players **easily accessible**, while making! sure they are not visible by customers. The video player may need manual rebooting,! therefore it should be accessible. This rule applies to all configurations.

If it's possible, it may be suitable to use a longer cable to position your player in a more! accessible location.

The video player must be well ventilated and protected form dust, cooking fumes, water or any other substance not suitable for electronic devices.

CONFIGURATION EXAMPLES FOR :

1 SCREEN WITH 1 PLAYER

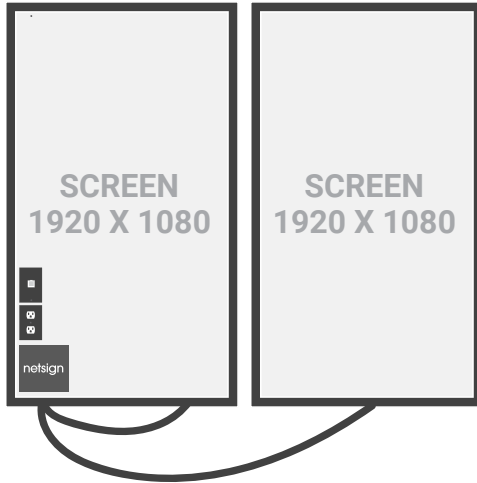


INSTALLATION OF MULTIPLE SCREENS

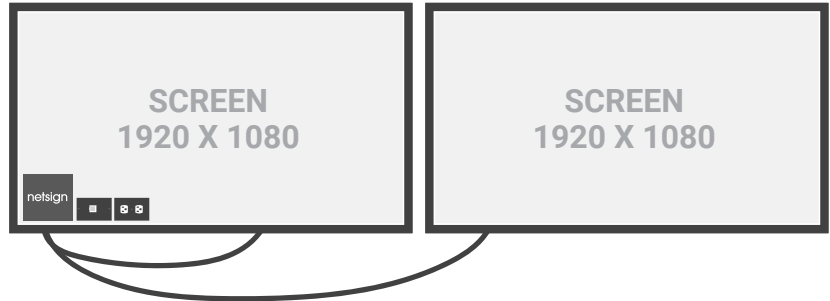
CONFIGURATION EXAMPLES FOR :

2 SCREENS WITH 1 PLAYER

VERTICAL



HORIZONTAL



INSTALLATION OF A USB EXTENSION

In the event that you encounter a technical problem that stops the broadcasting, it's recommended to have backup content on a USB key.

The Netsign.tv software has a screen capture function allowing you to have an up-to-date picture of your content.

To broadcast this content, simply change the source of your screen to USB mode with the remote control.

A USB extension will allow you to easily access the key.



USB KEY



USB EXTENSION